

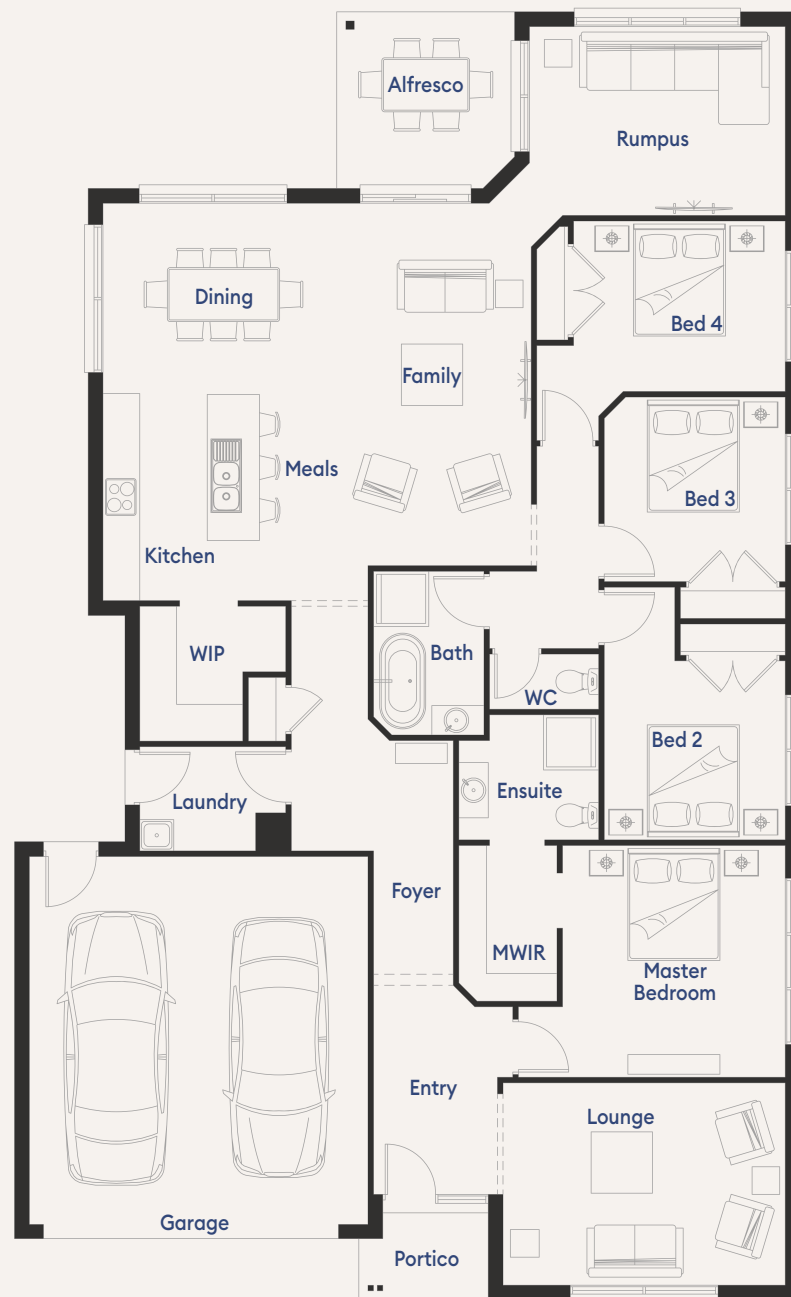
# Madden 25



House (width x length)  
**12.80m x 21.0m**

Minimum Lot Width#  
**14m+**

Minimum Lot Depth#  
**28m+**



## Room Sizes

Master Bedroom	3.6 x 3.8m
Bedroom 2	3.0x 2.9m
Bedroom 3	3.0 x 3.0m
Bedroom 4	3.5 x 2.8m
Family	3.5 x 5.9m
Dining	3.5 x 3.1m
Rumpus	4.2 x 3.1m
Lounge	4.6 x 3.3m

## Specifications

Ground Floor	185.45m <sup>2</sup>	19.96sq
Garage	36.44m <sup>2</sup>	3.92sq
Alfresco	8.22m <sup>2</sup>	0.88sq
Porch	2.97m <sup>2</sup>	0.32sq
<b>Total</b>	<b>233.08m<sup>2</sup></b>	<b>25.09sq*</b>

# PORTER DAVIS

# Madden 25

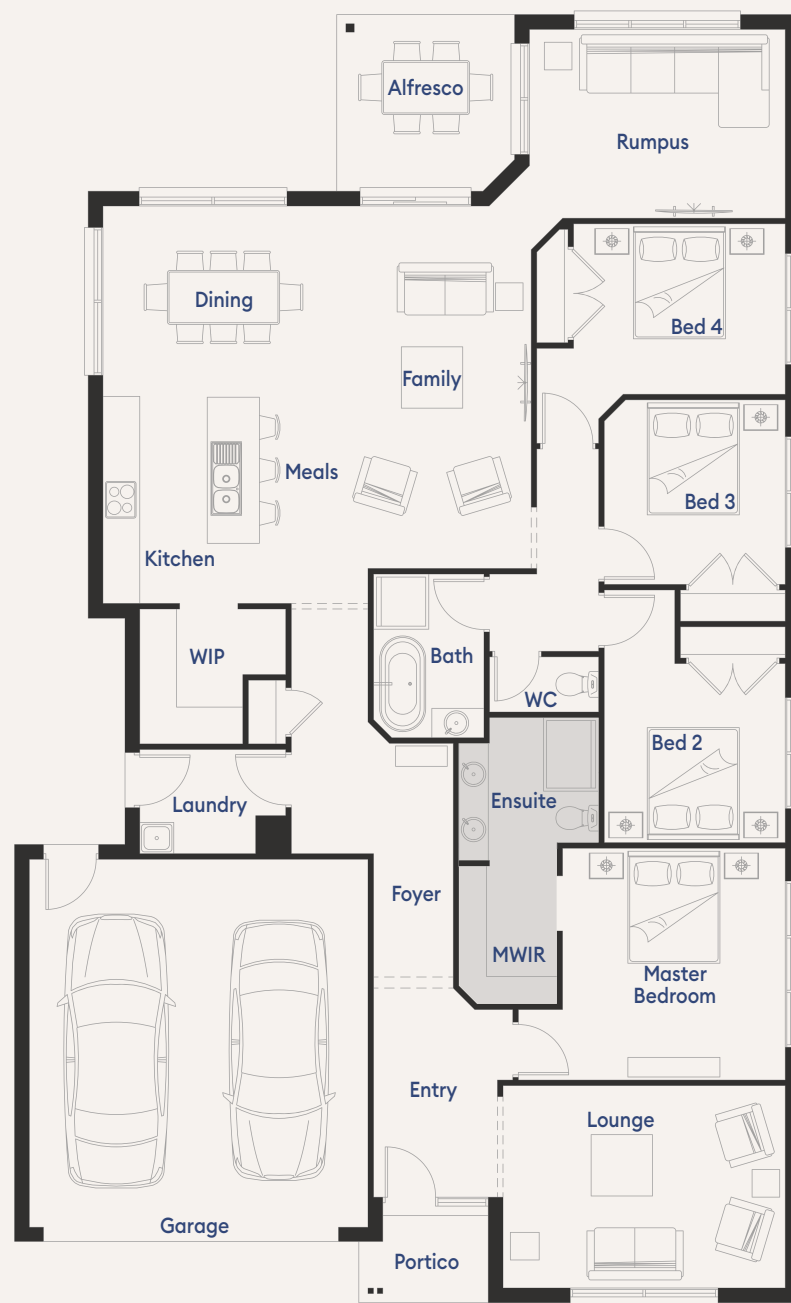


House (width x length)  
**12.80m x 21.0m**

Minimum Lot Width#  
**14m+**

Minimum Lot Depth#  
**28m+**

## Optimise Ensuite



## PORTER DAVIS

**More thought built in**

\* Sizes may vary slightly as per façade range. Floorplan based on the Maya façade – see façade pricelist for RRP. # Minimum Lot Sizes may vary due to Council requirements & estate guidelines. This work is exclusively owned by RSS Property Holdings and cannot be reproduced or copied either wholly or in part, in any form (graphic, electronic or mechanical, including photocopying and uploading to the internet) without the written permission of RSS Property Holdings. This document is for illustration purposes and should be used as a guide only. Illustrations are not to scale. Garage dimensions are external measurements only. Refer to actual working drawings.

# Madden 25



4



3



2



2

House (width x length)

12.80m x 21.0m

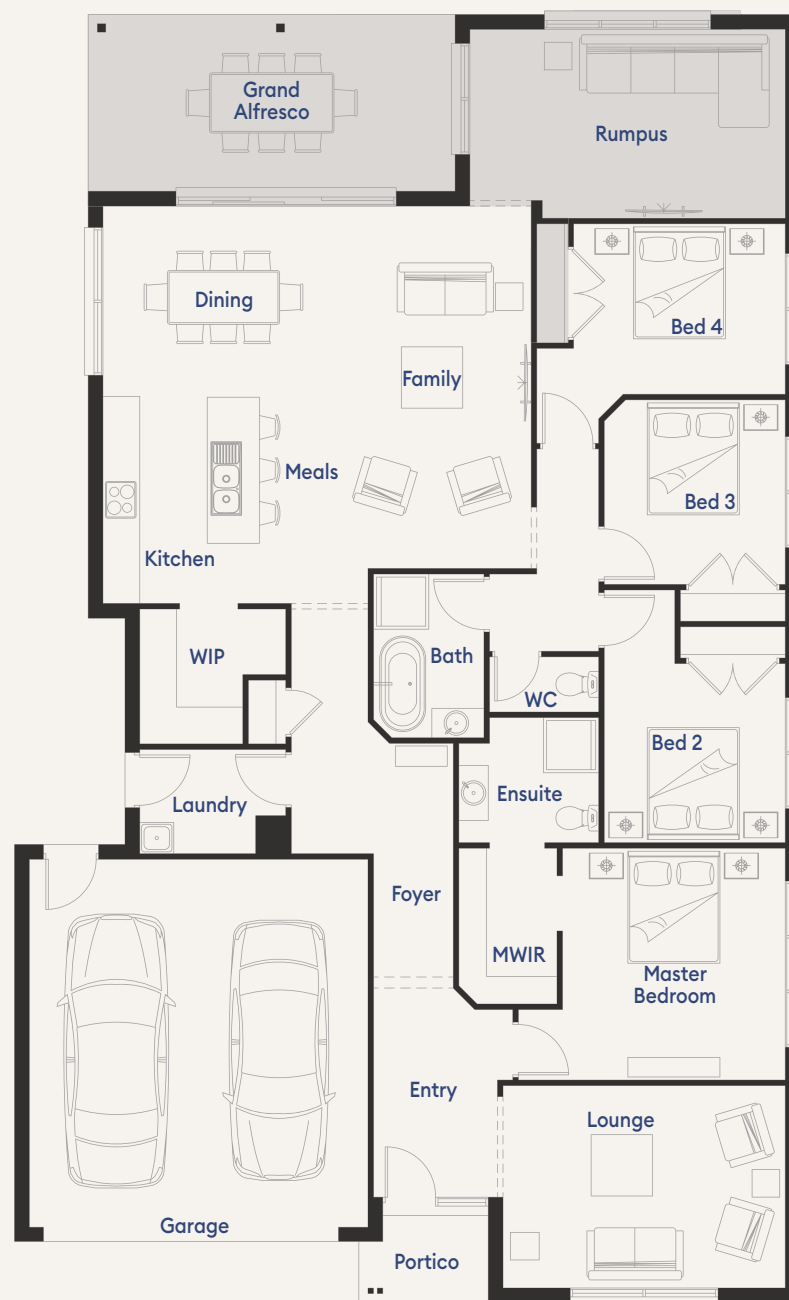
Minimum Lot Width#

14m+

Minimum Lot Depth#

28m+

Optimise Extended Rumpus and Grand Alfresco



## PORTER DAVIS

**More thought built in**