

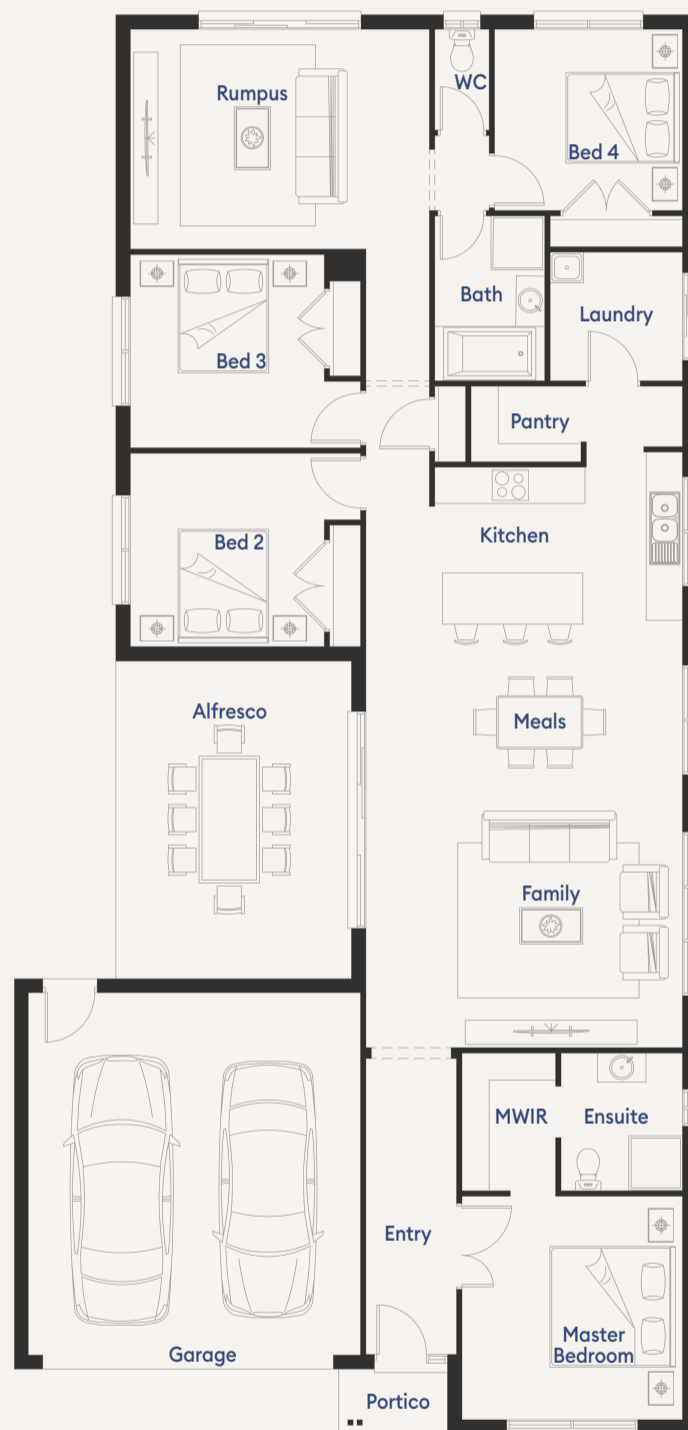
# Eastleigh 25



House (width x length)  
23.5m x 11.3m

Minimum Lot Width  
12.5m +

Minimum Lot Depth  
32m+



## Design Options

- + Ensuite Option
- + Study Option

For a more detailed view of all floorplans, visit [porterdavis.com.au](http://porterdavis.com.au)

## Room Sizes

Master Bedroom	3.7 x 3.7m
Bedroom 2	3.2 x 3.2m
Bedroom 3	3.2 x 3.2m
Bedroom 4	3.1 x 3.0m
Family	5.2 x 4.2m
Rumpus	3.9 x 3.6m

## Specifications

Living Area	173.5m <sup>2</sup>	18.68sq
Garage	36.98m <sup>2</sup>	3.98sq
Alfresco	20.51m <sup>2</sup>	0.21sq
Portico	1.94m <sup>2</sup>	2.21sq
<b>Total</b>	<b>232.93m<sup>2</sup></b>	<b>25.07sq</b>

# PORTER DAVIS

# Eastleigh 25

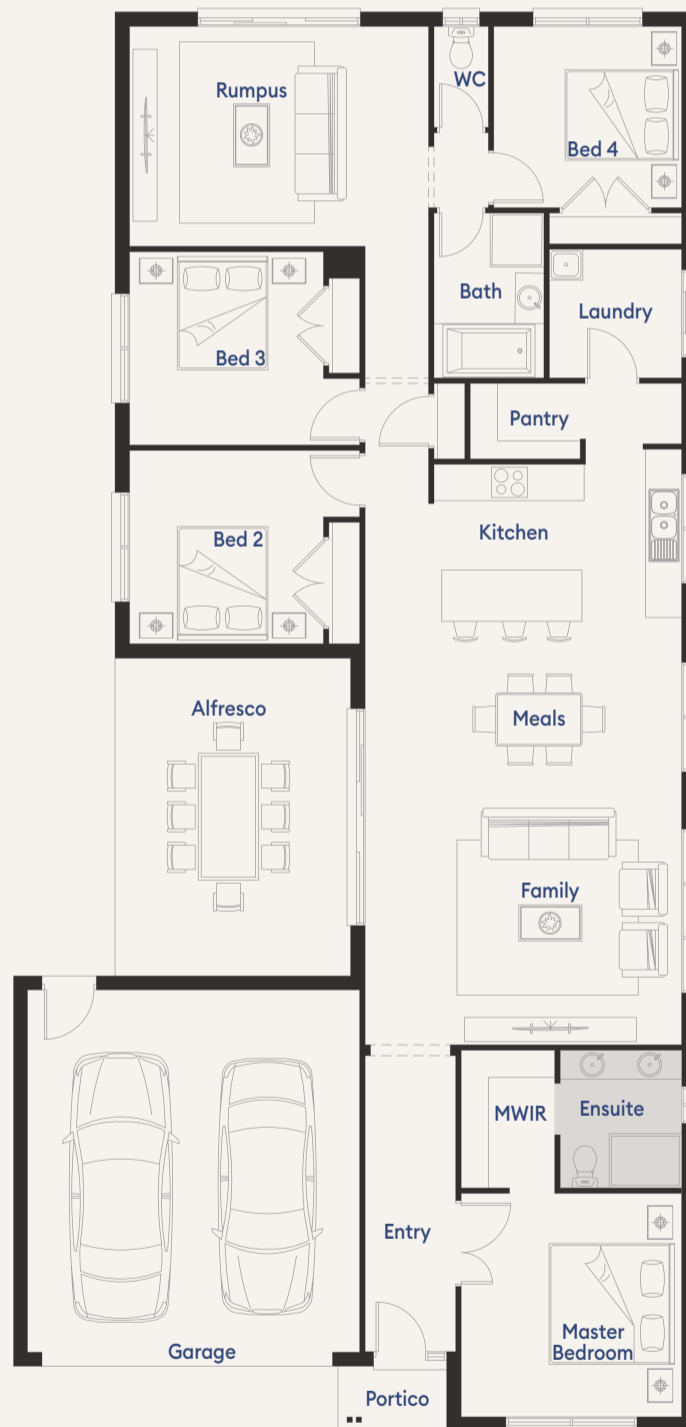


House (width x length)  
**23.5m x 11.3m**

Minimum Lot Width  
**12.5m +**

Minimum Lot Depth  
**32m+**

## Ensuite Option



## PORTER DAVIS

**More thought built in**

# Eastleigh 25

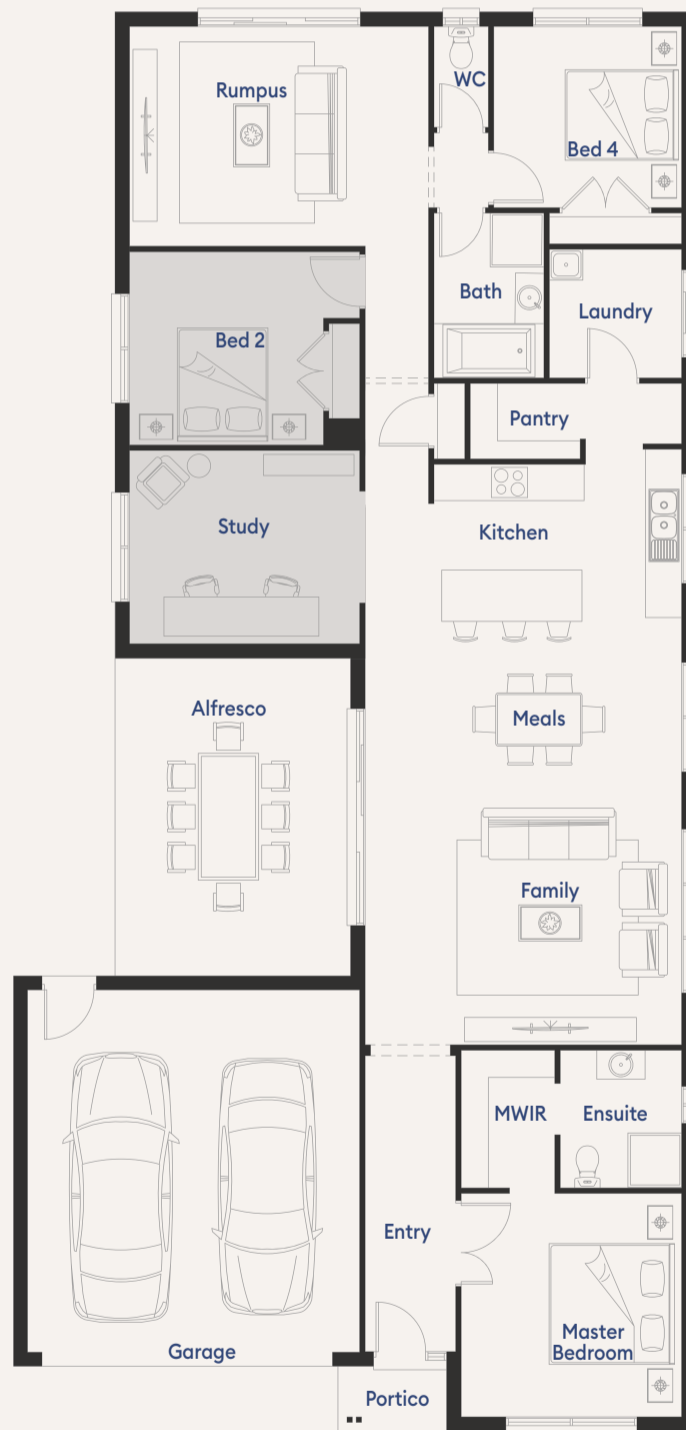


House (width x length)  
**23.5m x 11.3m**

Minimum Lot Width  
**12.5m +**

Minimum Lot Depth  
**32m+**

## Study Option



## PORTER DAVIS

**More thought built in**

\* Sizes may vary slightly as per façade range. Floorplan based on the Riviera façade - see façade pricelist for RRP. # Minimum Lot Sizes may vary due to Council requirements & estate guidelines. This work is exclusively owned by RSS Property Holdings and cannot be reproduced or copied either wholly or in part, in any form (graphic, electronic or mechanical, including photocopying and uploading to the internet) without the written permission of RSS Property Holdings. This document is for illustration purposes and should be used as a guide only. Illustrations are not to scale. Garage dimensions are external measurements only. Refer to actual working drawings.