

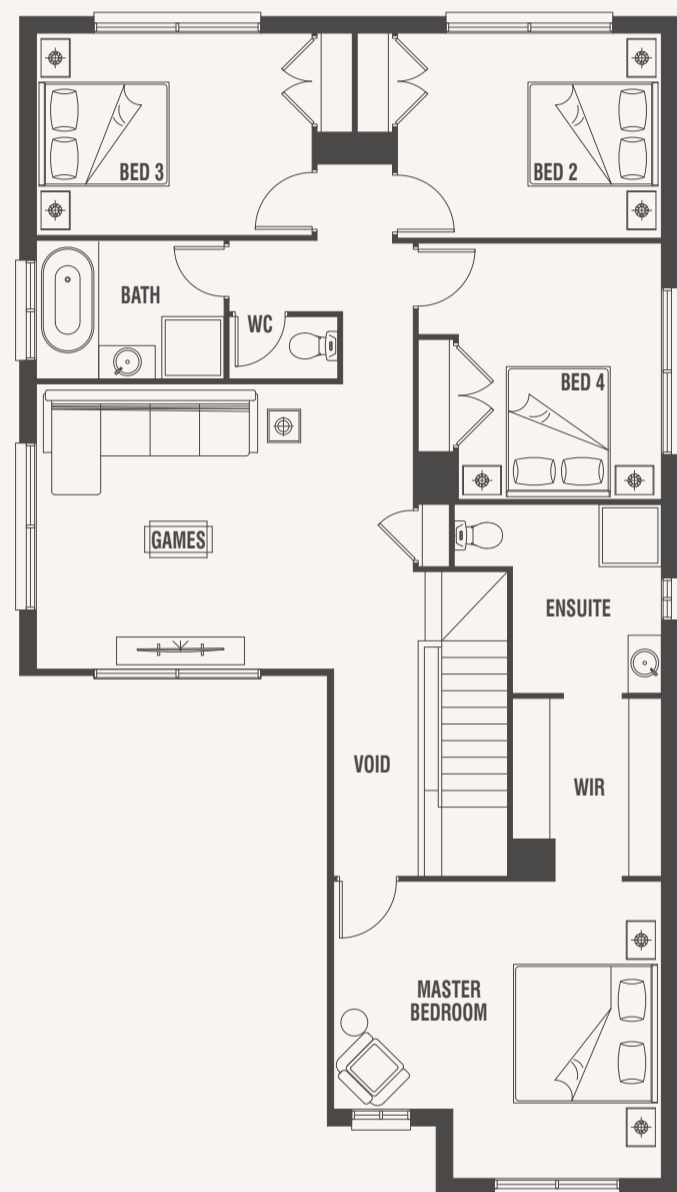
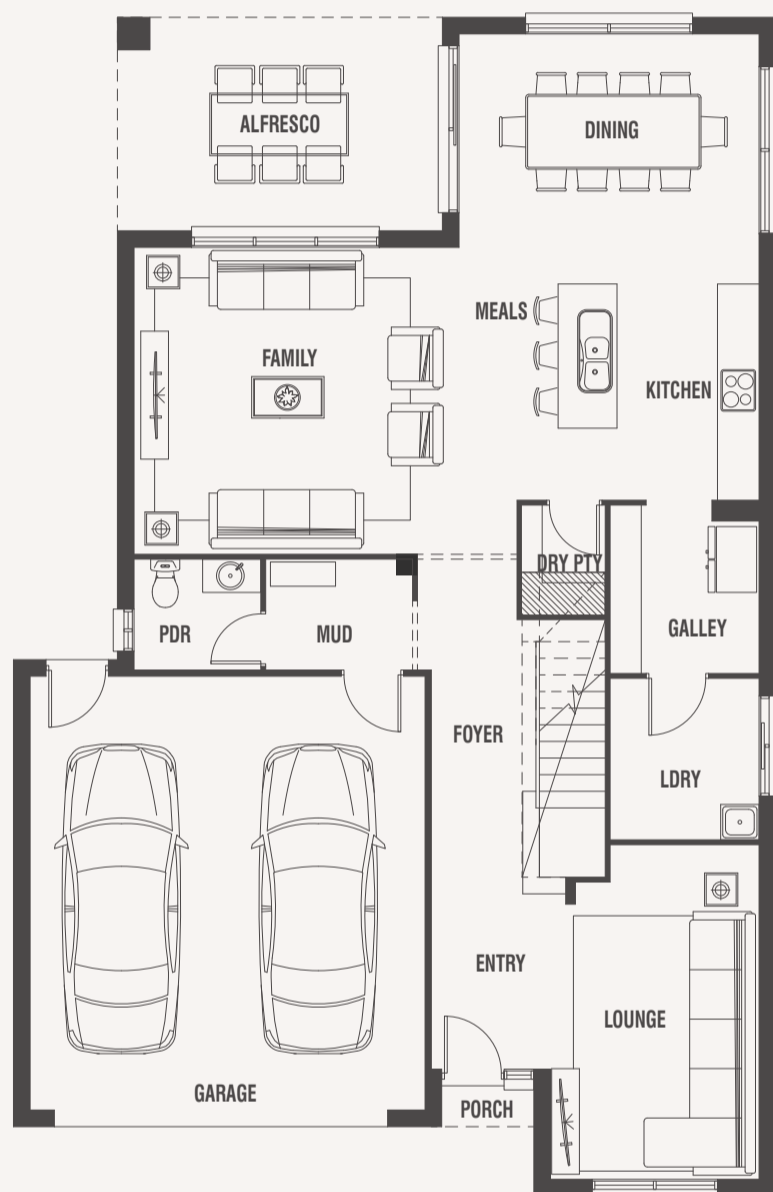
# Stradbroke 32



House (width x length)  
11.0m x 17.01m

Minimum Lot Width#  
12.5m+

Minimum Lot Depth#  
25m+



Standard floorplan with Challock façade

## Design Options

- + Build Over
- + Enclose Fridge
- + Ensuite Soaker Tub
- + Extended Lounge
- + Grand Alfresco
- + Linen to MUD
- + Rear Master
- + Shower to Powder
- + Study & Alfresco
- + Study, Alfresco & Rumpus

For a more detailed view of all floorplans, visit [porterdavis.com.au](http://porterdavis.com.au)

## Room Sizes

Master Bedroom	4.7 x 4.3m
Bedroom 2	3.8 x 3.0m
Bedroom 3	4.0 x 2.9m
Bedroom 4	2.9 x 3.7m
Family	4.7 x 4.4m
Dining	4.3 x 3.6m
Lounge	3.0 x 4.8m
Games	4.1 x 4.3m

## Specifications

Ground Floor	111.35m <sup>2</sup>	11.99sq
First Floor	126.73m <sup>2</sup>	13.64sq
Garage	39.11m <sup>2</sup>	4.21sq
Alfresco	14.45m <sup>2</sup>	1.56sq
Porch	0.78m <sup>2</sup>	0.08sq
<b>Total</b>	<b>292.42m<sup>2</sup></b>	<b>31.48sq*</b>

# PORTER DAVIS HOMES