

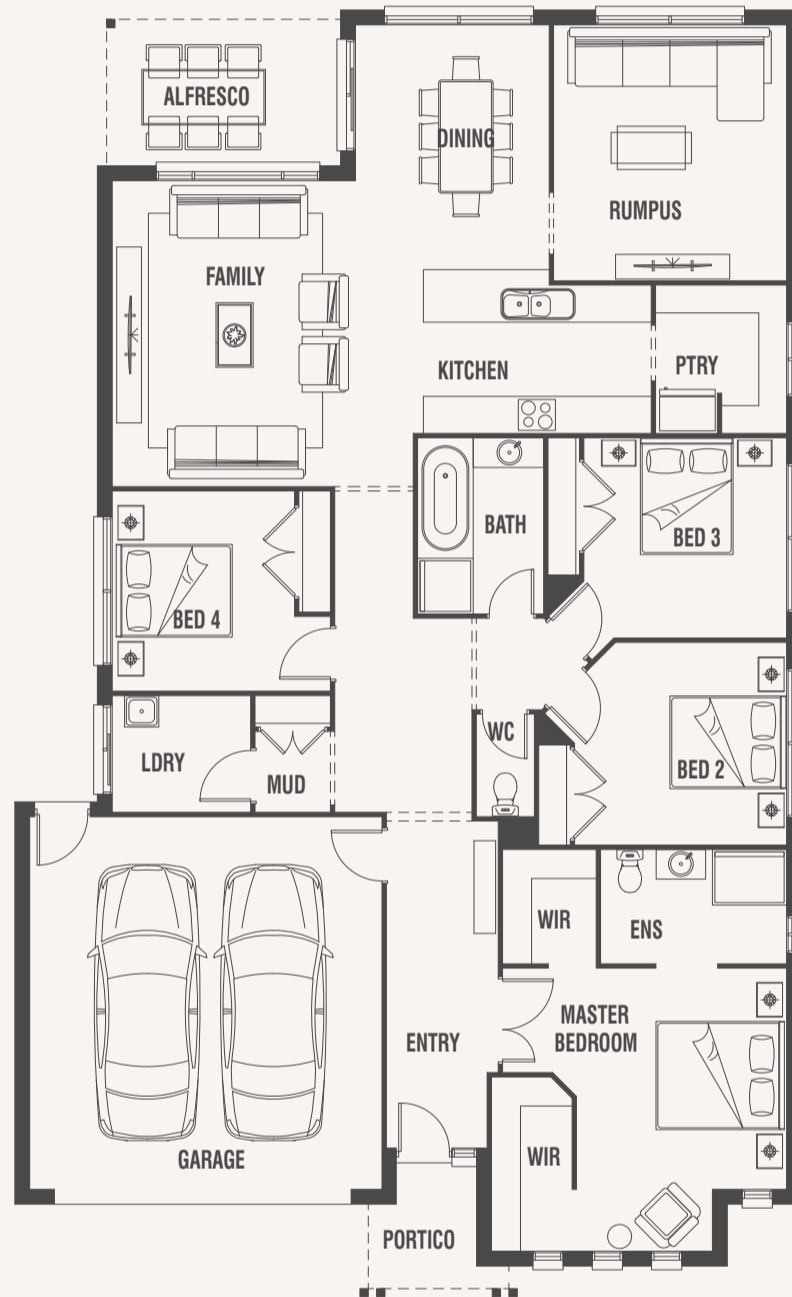
# Paddington 25



House (width x length)  
12.72m x 20.82m

Minimum Lot Width#  
14m+

Minimum Lot Depth#  
28m+



Standard floorplan with Riviera façade

## Design Options

- + Double Vanity (to Master Ensuite)
- + Double Vanity and Extended Shower (to Master Ensuite)
- + Grand Alfresco
- + iHUB
- + iHUB and Alfresco
- + Large WC

For a more detailed view of all floorplans, visit [porterdavis.com.au](http://porterdavis.com.au)

## Room Sizes

Master Bedroom	4.6 x 3.4m
Bedroom 2	3.3 x 3.4m
Bedroom 3	3.2 x 3.3m
Bedroom 4	3.2 x 3.5m
Family	5.0 x 3.9m
Dining	4.0 x 3.1m
Living	4.1 x 3.8m

## Specifications

Living Area	184.30m <sup>2</sup>	19.84sq
Garage	37.72m <sup>2</sup>	4.06sq
Alfresco	8.97m <sup>2</sup>	0.97sq
Portico	4.03m <sup>2</sup>	0.43sq*
<b>Total</b>	<b>235.02m<sup>2</sup></b>	<b>25.30sq*</b>

# PORTER DAVIS HOMES