

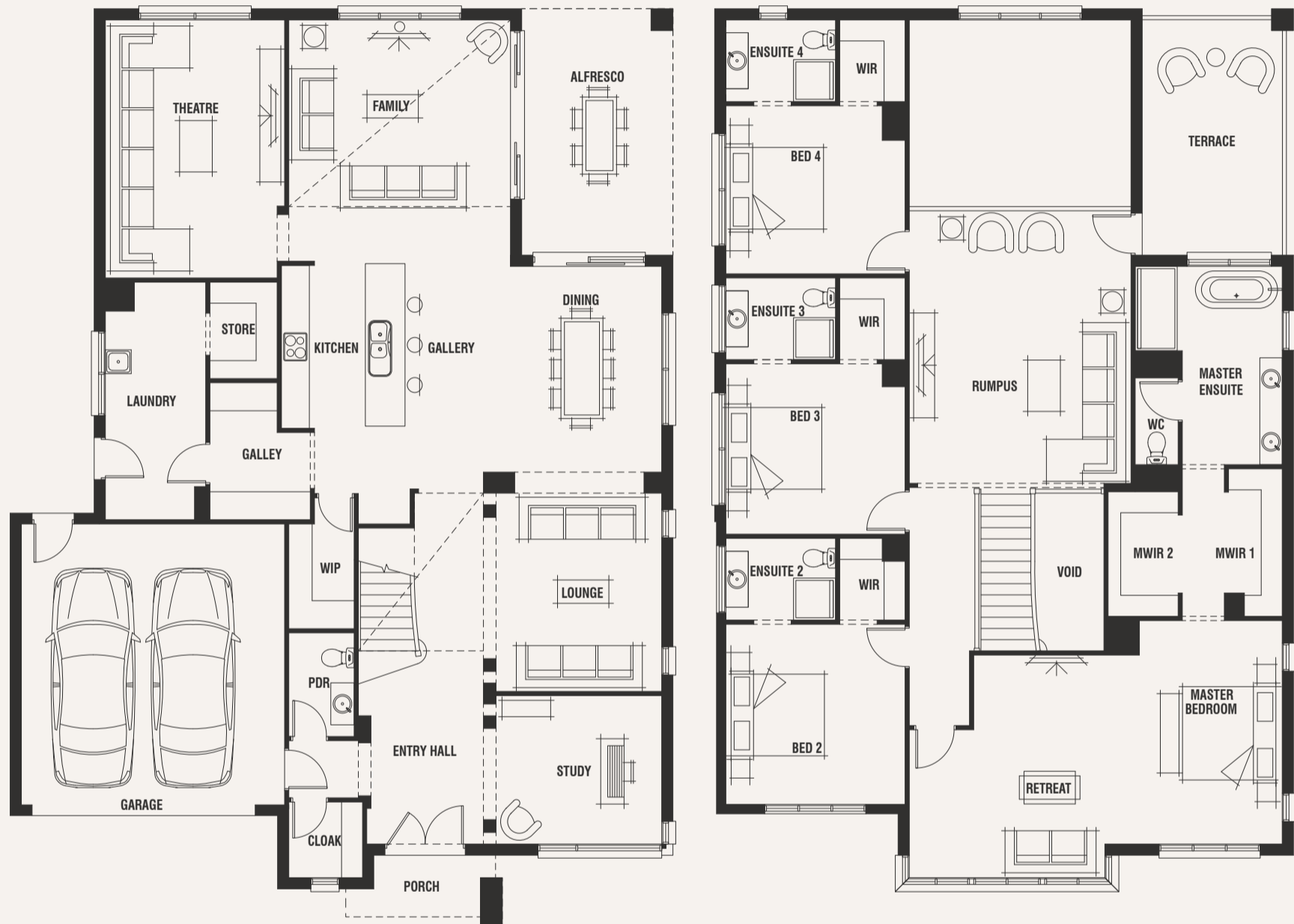
Waldorf Grange 50



House (width x length)
14.20m x 19.69m

Minimum Lot Width#
16m+

Minimum Lot Depth#
32m+



Standard floorplan with Retro façade

Design Options

- + Bedroom 5 in Lieu of Terrace
- + Drying Room
- + Enclosed Rear Corner
- + Ensuite to Terrace Access
- + Feng Shui Staircase
- + Grand Lounge
- + Grand Home Theatre
- + Guest Suite
- + Rear Alfresco
- + Rear Alfresco B
- + Shower to Powder Room
- + Upper Bath
- + Upper Linen
- + Walk-in-Linen

For a more detailed view of all floorplans, visit porterdavis.com.au

Room Sizes

Master Bedroom	3.8 x 4.8m
Master Bedroom Retreat	4.2 x 4.8m
Bedroom 2	3.8 x 3.9m
Bedroom 3	3.8 x 3.6m
Bedroom 4	3.8 x 3.6m
Family	4.8 x 5.2m
Dining	3.8 x 4.4m
Lounge	3.6 x 4.2m
Rumpus	4.8 x 5.8m
Home Theatre	3.8 x 5.5m
Study	3.6 x 3.2m

Specifications

Living Area	387.91m ²	41.76sq
Garage	37.16m ²	4.00sq
Alfresco	17.11m ²	1.84sq
Terrace	17.11m ²	1.84sq*
Porch	4.04m ²	0.43sq*
Total	463.33m²	49.87sq*

PORTER DAVIS