

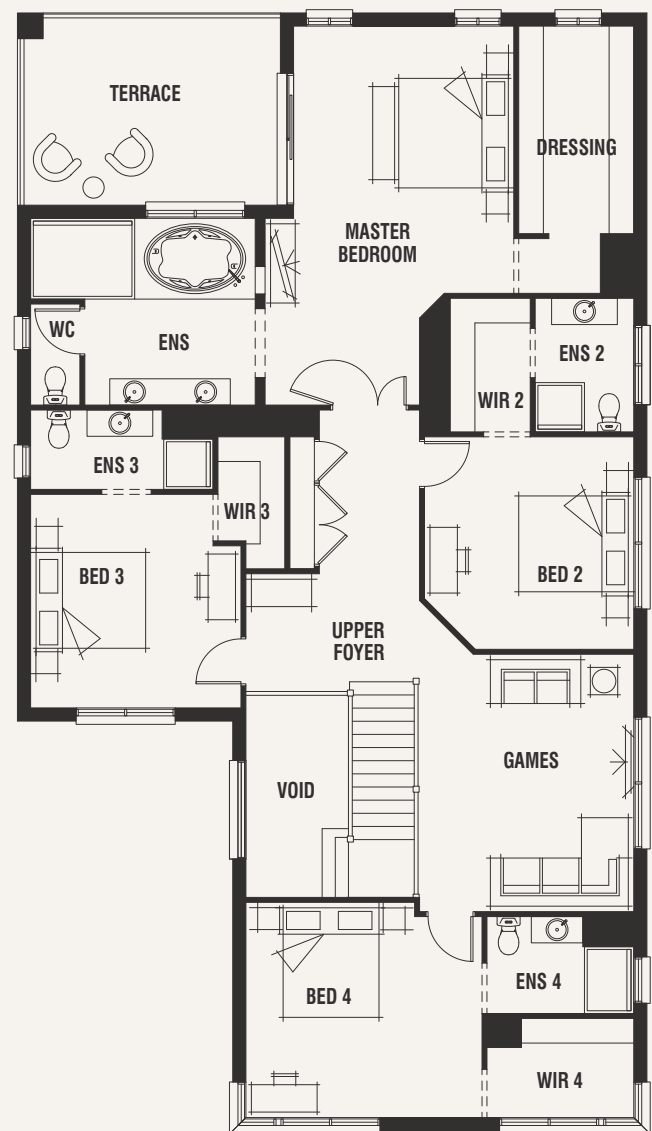
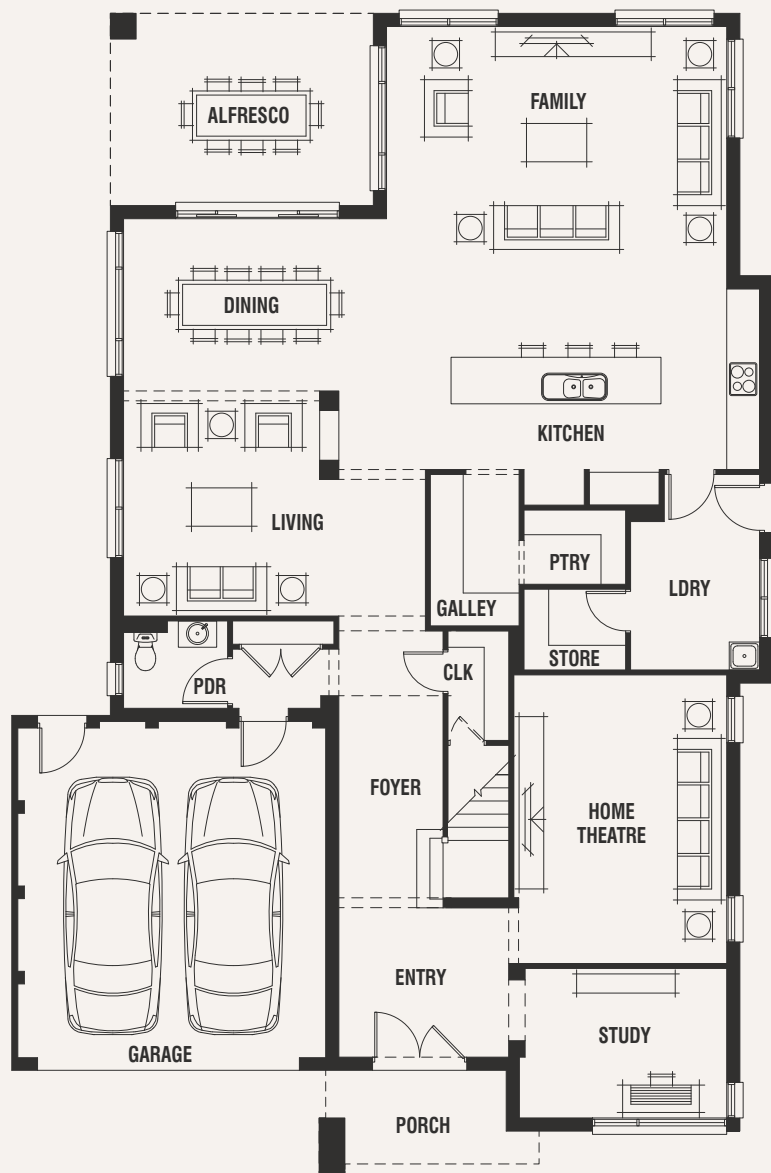
Plaza49



House (width x length)
13.89m x 21.24m

Minimum Lot Width#
15.24m+

Minimum Lot Depth#
32m+



Standard floorplan with Retro façade

Design Options

- + Drying Room
- + Fridge to Galley
- + Grand Galley
- + Grand Home Theatre
- + Grand Living
- + Grand Master Suite
- + Grand Master Suite, Dining & Living
- + Grand Master Suite, Dining & Living with Alfresco
- + Grand Master Suite, Dining & Living with Grand Alfresco
- + Lower Master Bedroom 2
- + Lower Master Bedroom 2 with Separate WC
- + Laundry Chute
- + Princess Suite (to Bedroom 4)
- + Shower to Powder Room
- + Upper Bath

For a more detailed view of all floorplans, visit porterdavis.com.au

Room Sizes

Master Bedroom	4.0 x 4.9m
Bedroom 2	3.8 x 3.9m
Bedroom 3	3.8 x 3.9m
Bedroom 4	4.3 x 3.9m
Study	3.8 x 2.7m
Living	3.6 x 3.9m
Dining	3.9 x 3.1m
Home Theatre	3.9 x 5.3m
Family	6.2 x 4.8m
Games	3.9 x 4.7m

Specifications

Living Area	377.34m ²	40.62sq
Garage	36.70m ²	3.95sq
Alfresco	16.85m ²	1.81sq
Terrace	16.85m ²	1.81sq
Porch	6.20m ²	0.67sq*
Total	453.94m²	48.86sq*

PORTER DAVIS