

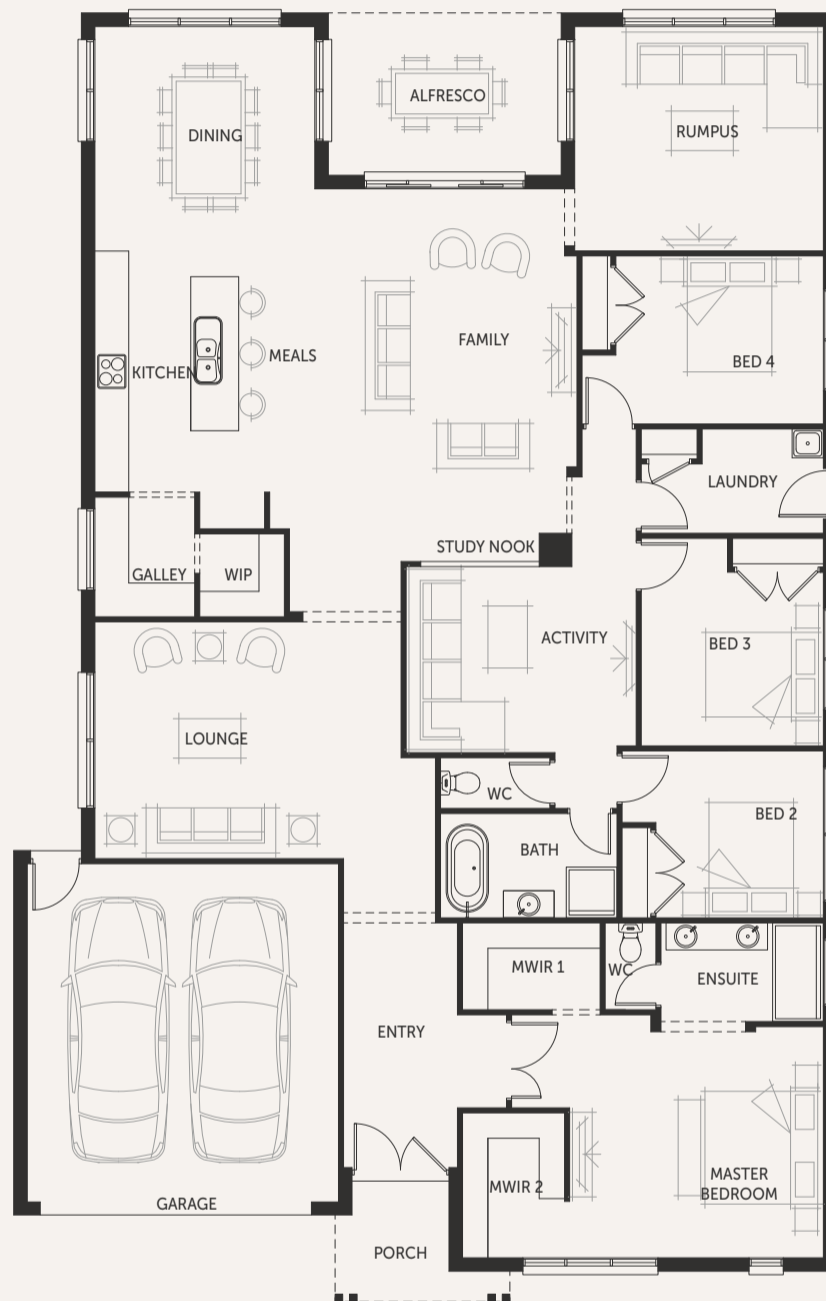
Vancouver 33



House (width x length)
14.60m x 22.86m

Minimum Lot Width#
16m+

Minimum Lot Depth#
32m+



Standard floorplan with Seaside façade

Design Options

- + All WIR
- + Alternate Bath
- + Alternate Kitchen
- + Alternate Rumpus & Grand Alfresco
- + Bed 5 with Ensuite
- + Grand Alfresco
- + Powder Room
- + Study
- + Formal Dining/Meals

For a more detailed view of all floorplans, visit porter-davis.com.au

Room Sizes

Master Bedroom	4.1 x 4.5m
Bedroom 2	3.0 x 3.0m
Bedroom 3	3.1 x 3.2m
Bedroom 4	3.0 x 3.7m
Family	5.0 x 4.2m
Dining	3.9 x 3.9m
Lounge	4.2 x 4.0m
Rumpus	4.0 x 4.4m
Activity	3.3 x 4.1m

Specifications

Living Area	251.09m ²	27.03sq
Garage	36.32m ²	3.91sq
Alfresco	11.89m ²	1.28sq
Portico	4.72m ²	0.51sq*
Total	304.02m²	32.73sq

PORTER DAVIS