

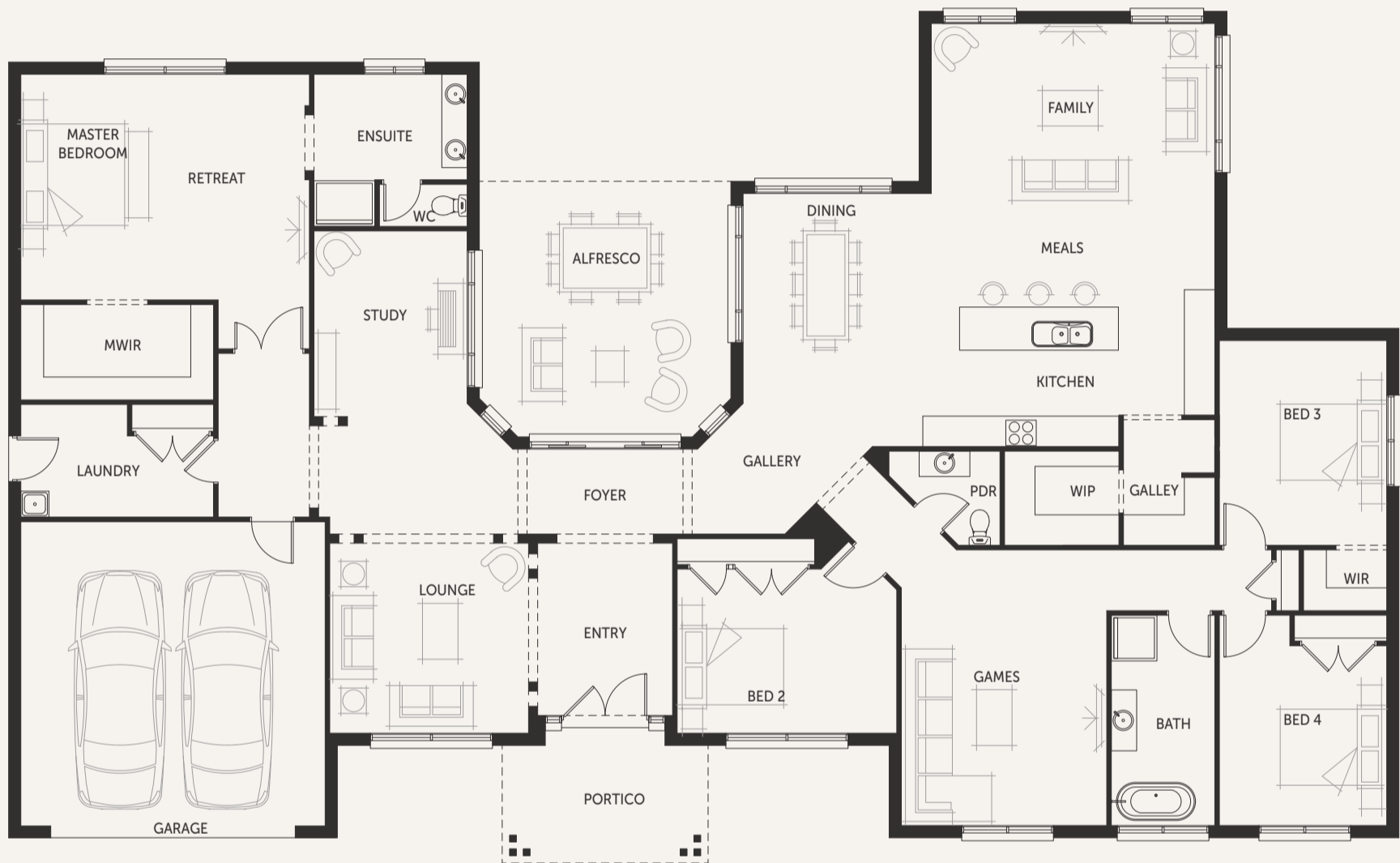
Hillside 41



House (width x length)
27.41m x 16.79m

Minimum Lot Width#
35m+

Minimum Lot Depth#
20m+



Standard floorplan with Traditional façade

Design Options

- + Rumpus
- + Side Alfresco
- + Ensuite Soaker Tub (to master)

For a more detailed view of all floorplans, visit porterdavis.com.au

Room Sizes

Master Bedroom	4.5 x 5.7m
Bedroom 2	3.2 x 4.3m
Bedroom 3	4.0 x 3.3m
Bedroom 4	3.5 x 3.3m
Family	3.5 x 5.6m
Dining	4.1 x 3.7m
Lounge	3.7 x 4.0m
Games	4.2 x 4.0m
Study	3.6 x 3.0m

Specifications

Living Area	302.64m ²	32.58sq
Garage	39.31m ²	4.23sq
Alfresco	24.42m ²	2.63sq
Portico	10.25m ²	1.10sq*
Total	376.62m²	40.54sq

PORTER DAVIS