

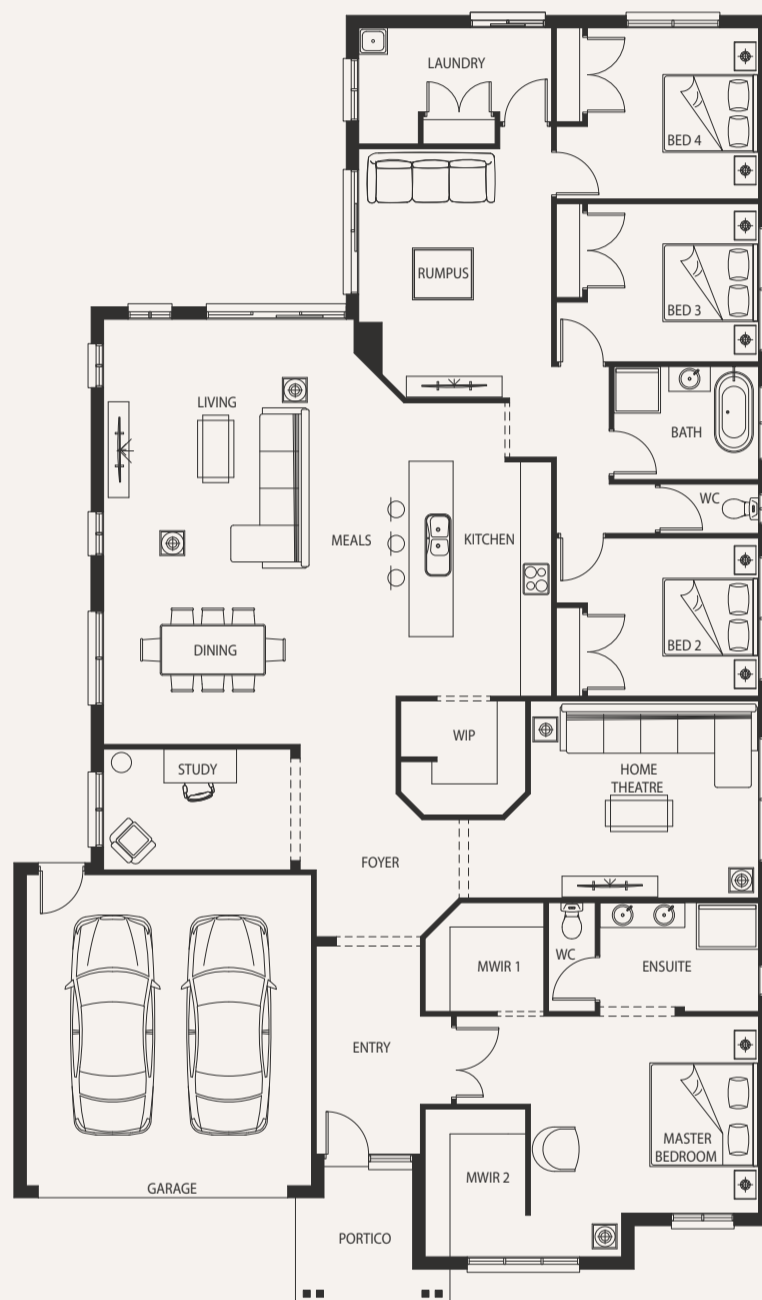
Dunedin 31



House (width x length)
14.60m x 24.87m

Minimum Lot Width#
16m+

Minimum Lot Depth#
32m+



Standard floorplan with Seaside façade

Design Options

- + Alfresco
- + Bathroom
- + Feng Shui Kitchen with Alfresco
- + Feng Shui Kitchen with Grand Alfresco
- + Front Lounge with Feng Shui Kitchen
- + Gallery and Pantry
- + Grand Alfresco
- + Powder Room
- + Raked Ceiling to Dining Living & Grand Alfresco
- + Raked Ceiling to Dining & Living with Alfresco

For a more detailed view of all floorplans, visit porterdavis.com.au

Room Sizes

Master Bedroom	4.4 x 4.2m
Bedroom 2	3.3 x 3.1m
Bedroom 3	3.3 x 3.1m
Bedroom 4	3.3 x 3.3m
Study	3.6 x 2.3m
Home Theatre	5.6 x 3.8m
Living	4.8 x 5.1m
Dining	5.6 x 3.1m
Rumpus	3.7 x 4.8m

Specifications

Living Area	250.93m ²	27.01sq
Garage	36.25m ²	3.90sq
Portico	6.20m ²	0.67sq*
Total	293.38m²	31.58sq*

PORTER DAVIS