

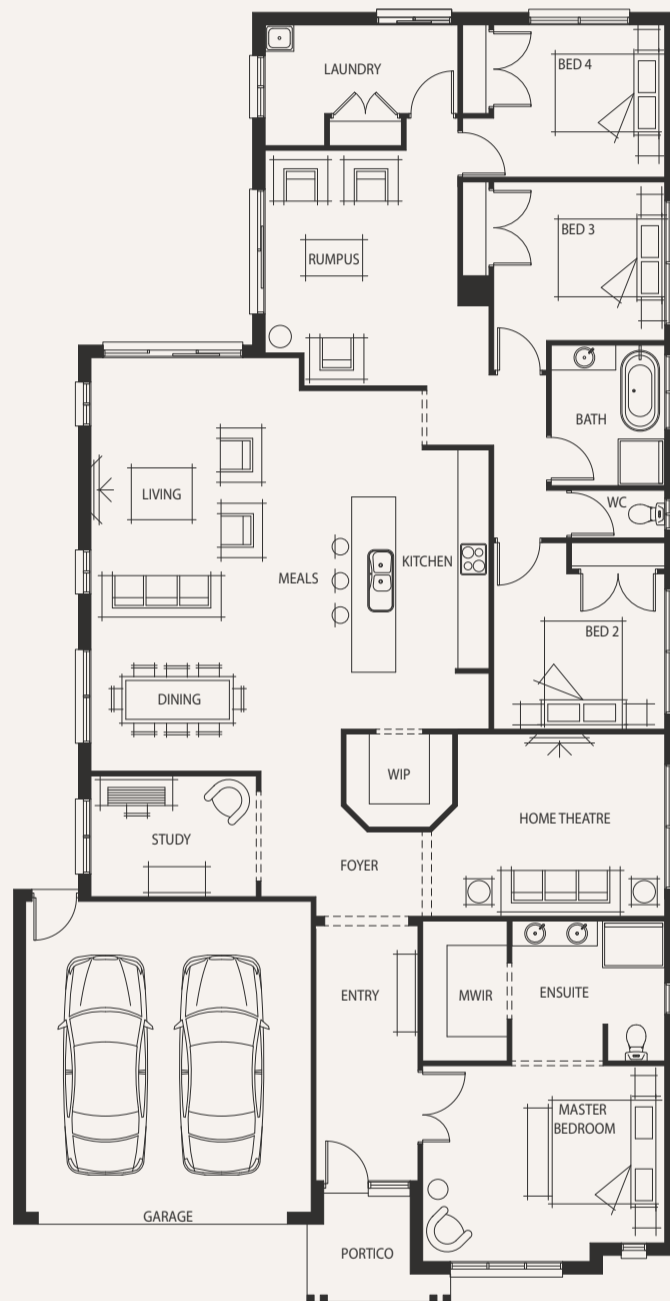
# Dunedin 29



House (width x length)  
**12.80m x 24.88m**

Minimum Lot Width#  
**14m+**

Minimum Lot Depth#  
**32m+**



Standard floorplan with Seaside façade

## Design Options

- + Alfresco
- + Extended Living & Grand Alfresco
- + Feng Shui Kitchen
- + Feng Shui Kitchen with Extended Home Theatre
- + Feng Shui Kitchen with Raked Ceiling
- + Raked Ceiling to Dining, Living & Alfresco
- + Soaker Tub to Ensuite

For a more detailed view of all floorplans, visit [porterdavis.com.au](http://porterdavis.com.au)

## Room Sizes

Master Bedroom	4.7 x 3.8m
Bedroom 2	3.3 x 3.0m
Bedroom 3	3.3 x 3.1m
Bedroom 4	3.1 x 2.9m
Study	3.2 x 2.3m
Home Theatre	4.0 x 3.5m
Living	3.6 x 5.1m
Dining	4.8 x 2.9m
Rumpus	3.7 x 3.9m

## Specifications

Living Area	223.77m <sup>2</sup>	24.09sq
Garage	36.19m <sup>2</sup>	3.90sq
Portico	4.40m <sup>2</sup>	0.47sq*
<b>Total</b>	<b>264.36m<sup>2</sup></b>	<b>28.46sq*</b>

# PORTER DAVIS