

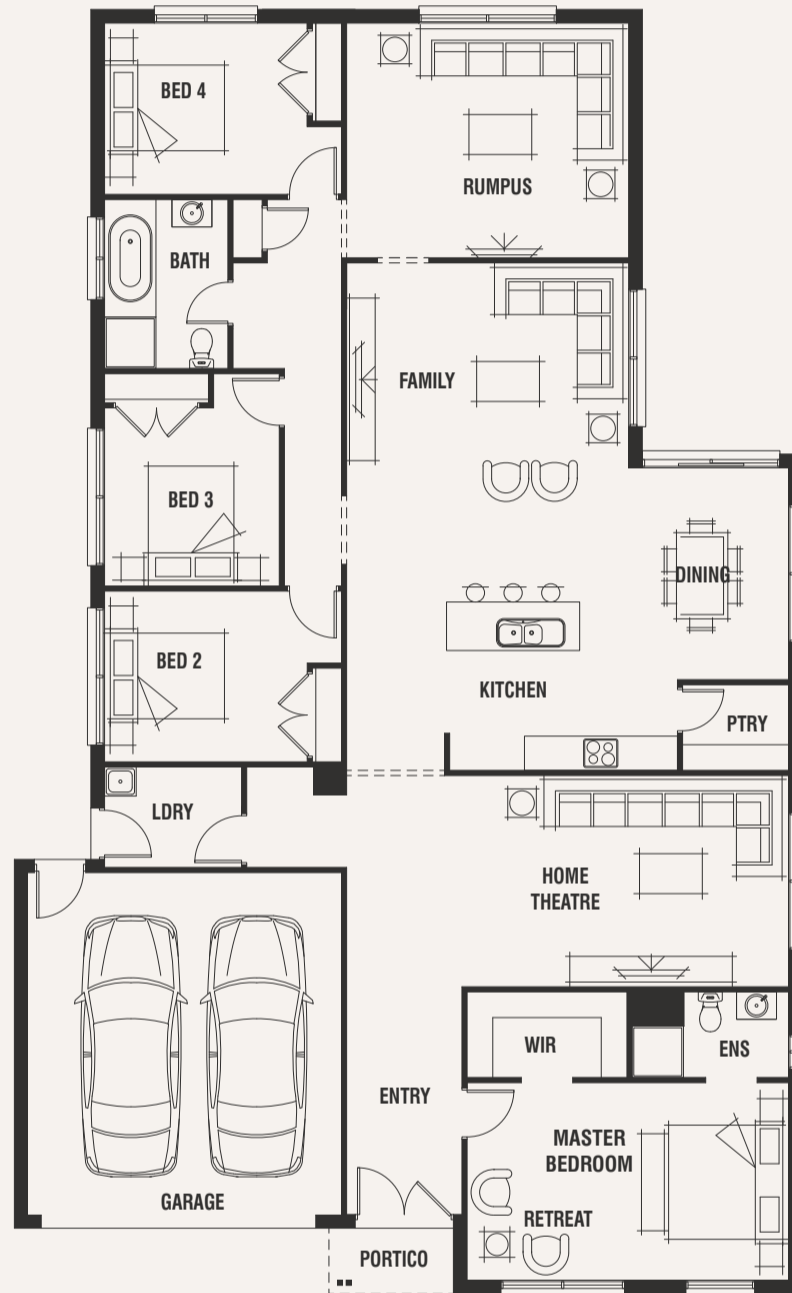
# Kew 28



House (width x length)  
**13.8m x 22.5m**

Minimum Lot Width#  
**15m+**

Minimum Lot Depth#  
**30m+**



Standard floorplan with Maya façade

## Design Options

- + Corner Alfresco
- + Extended Kitchen
- + Extended Laundry
- + Grand Alfresco
- + Master Ensuite
- + Separate Wc & Bathroom
- + Side Alfresco
- + Side Kitchen, Rumpus with Extended Ensuite & Courtyard
- + Walk-In-Linen

## Room Sizes

Master Bedroom	5.6 x 3.5m
Bedroom 2	3.6 x 3.0m
Bedroom 3	3.1 x 3.1m
Bedroom 4	3.6 x 3.0m
Family	4.9 x 4.1m
Dining	2.8 x 3.7m
Home Theatre	5.7 x 3.7m
Rumpus	4.9 x 4.1m

## Specifications

Living Area	223.89m <sup>2</sup>	24.10sq
Garage	36.01m <sup>2</sup>	3.88sq
Porch	2.51m <sup>2</sup>	0.27sq*
<b>Total</b>	<b>262.41m<sup>2</sup></b>	<b>28.25sq*</b>

For a more detailed view of all floorplans, visit [porter-davis.com.au](http://porter-davis.com.au)

# PORTER DAVIS