

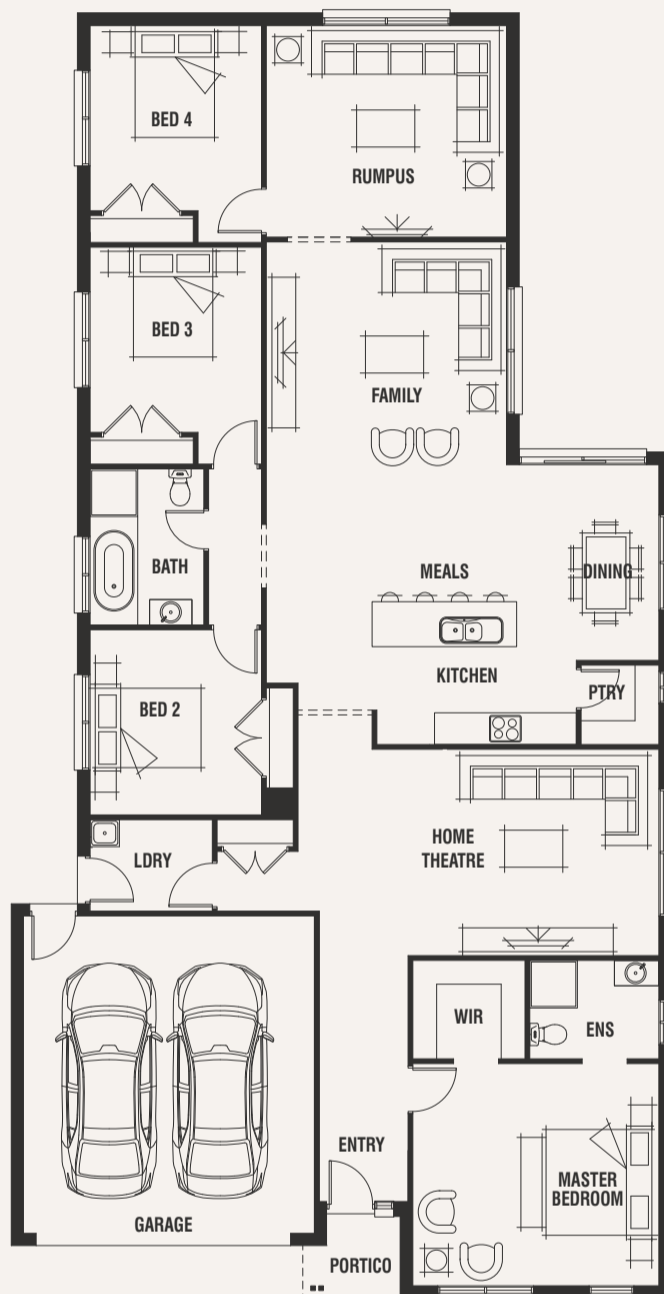
# Kew 27



House (width x length)  
**12.48m x 24.3m**

Minimum Lot Width#  
**14m+**

Minimum Lot Depth#  
**32m+**



Standard floorplan with Maya façade

## Design Options

- + Corner Alfresco
- + Double Vanity (to master ensuite)
- + Extended Laundry
- + Front Lounge
- + Grand Alfresco
- + Separate WC
- + Side Alfresco
- + Walk-in-Linen

For a more detailed view of all floorplans, visit [porterdavis.com.au](http://porterdavis.com.au)

## Room Sizes

Master Bedroom	4.7 x 4.2m
Bedroom 2	3.2 x 3.5m
Bedroom 3	3.2 x 3.5m
Bedroom 4	3.2 x 3.5m
Family	4.5 x 4.6m
Dining	1.7 x 3.7m
Home Theatre	4.7 x 3.9m
Rumpus	4.5 x 4.0m

## Specifications

Living Area	214.14m <sup>2</sup>	23.05sq
Garage	35.99m <sup>2</sup>	3.87sq
Portico	2.66m <sup>2</sup>	0.29sq*
<b>Total</b>	<b>252.79m<sup>2</sup></b>	<b>27.21 sq*</b>

# PORTER DAVIS