

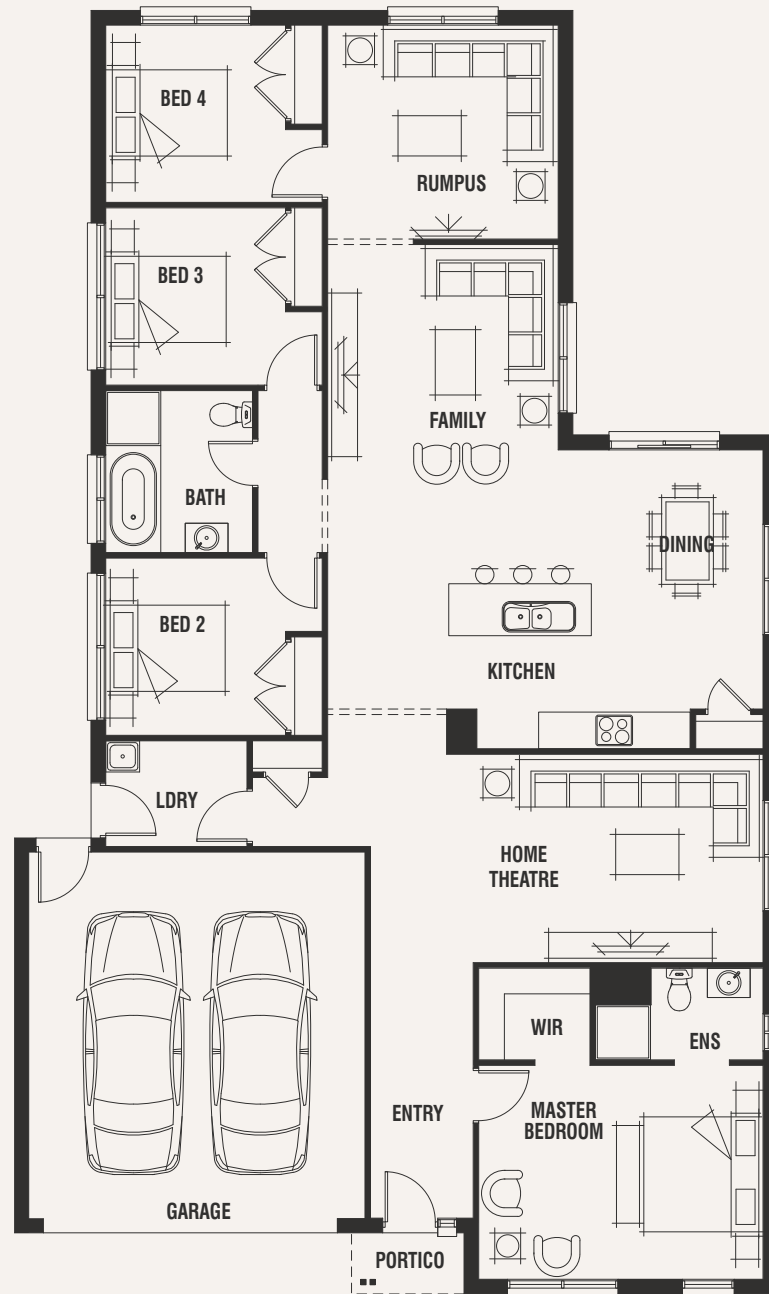
Kew 23



House (width x length)
12.48m x 21.0m

Minimum Lot Width#
14m+

Minimum Lot Depth#
28m+



Standard floorplan with Maya façade

Design Options

- + Corner Alfresco
- + Extended Kitchen
- + Grand Alfresco
- + Linen
- + Master Ensuite
- + Reverse Master and Theatre
- + Side Alfresco

For a more detailed view of all floorplans, visit porterdavis.com.au

Room Sizes

Master Bedroom	4.7 x 3.5m
Bedroom 2	2.9 x 2.9m
Bedroom 3	2.9 x 2.9m
Bedroom 4	2.9 x 2.9m
Family	3.8 x 3.8m
Dining	2.8 x 4.2m
Home Theatre	4.7 x 3.4m
Rumpus	3.8 x 3.5m

Specifications

Living Area	178.54m ²	19.22sq
Garage	35.99m ²	3.87sq
Portico	1.84m ²	0.20sq*
Total	216.37m²	23.29sq*

PORTER DAVIS